

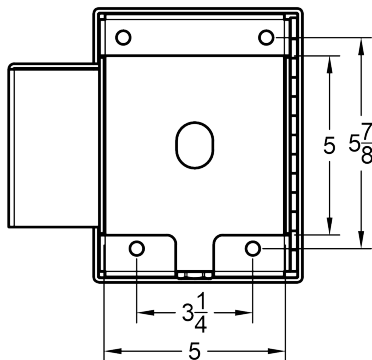
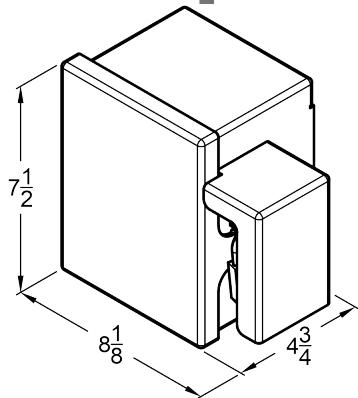


VANDAL



AA-EB-2G-PL

Vandal Resistant Double Gang Electrical Outlet Security Box with Protected Padlock



Features:

- Vandal Resistant Design
- Made in USA
- 10 Year Vandalism Warranty on 12g
- Protective Shroud for Padlock (not included)
- Spray & Drip Deflective
- Surface Mounted
- Corrosion Resistant
- Flexible Applications
- Removable Backplate
- LEED Sustainable Materials
- Bottom & Rear Conduit Access
- Fits Most Double-Gang Duplex Receptacle Boxes (Not Included)
- Removable Backing Plate for Surface & Recessed Applications
- Accommodates 1/2" & 3/4" Conduit on Bottom and Back
- Replaces AA-EB-4R

Dimensions:

- Exterior: 8 1/8" x 7 1/2" x 4 3/4" (WxHxD)
- Interior: 5" x 7" x 4 3/8" (WxHxD)
- Rear opening size: 5" x 5" (WxH)

Weight: 9 lbs

Material Options:

- 12-gauge 304L Stainless Steel
- 12-gauge 316L Stainless Steel

Model Names:

- AA-EB-2G-PL-304L-12g
- AA-EB-2G-PL-316L-12g

Finish: Stainless Steel Satin # 4 Finish

Compatibility: Fits most double-gang duplex receptacle boxes (not included). 1/2" and 3/4" conduit, with up to 0.922" outside diameter. Designed Specifically for

- Greenfield B232BRS Box
- Greenfield C2GFI2PS Weatherproof Cover

Mounting: 3/8" Surface Mounting Hole Placements. Mounting Hardware is not included due to wide variety of mounting surfaces. Installer must select 3/8" hardware suitable for application.

Installation: Secure fixture to wall with appropriate 3/8" stainless steel anchoring hardware (not provided) for optimal installation strength. Recommended 3/4" or greater back bracing for walls. Partitions may require T-nuts or other suitable anchoring devices. When possible it is recommended that units be through bolted back to back providing optimal installation strength.

Guide Specification: Security Box shall be constructed with 12 gauge 304L or 12 gauge 316L Stainless Steel joined w/ TIG welds and edges deburred. Security Box shall not be cross-metal contaminated during manufacturing construction. Security Box shall provide protective cover against drip and spray. Protective shroud adds security for padlock. Security Box shall have 3/8" mounting holes. Security Box shall accommodate standard double-gang duplex receptacle box styles. 316L SS shall be used for US Navy maritime use or if exposure to salt water is prevalent.

